



# **Intellicyt Hypercyt Autosampler**

## **Device Driver Quick Reference**

Original Instructions



**Agilent Technologies**

# Notices

© Agilent Technologies, Inc. 2012

No part of this manual may be reproduced in any form or by any means (including electronic storage and retrieval or translation into a foreign language) without prior agreement and written consent from Agilent Technologies, Inc. as governed by United States and international copyright laws.

## User Guide Part Number

G5415-90001

## Edition

Revision 00, December 2012

## Contact Information

Agilent Technologies Inc.  
Automation Solutions  
5301 Stevens Creek Blvd.  
Santa Clara, CA 95051  
USA

Technical Support: 1.800.979.4811  
or +1.408.345.8011  
[service.automation@agilent.com](mailto:service.automation@agilent.com)

Customer Service: 1.866.428.9811  
or +1.408.345.8356  
[orders.automation@agilent.com](mailto:orders.automation@agilent.com)

European Service: +44 (0) 845 712 5292  
[euroservice.automation@agilent.com](mailto:euroservice.automation@agilent.com)

Documentation feedback:  
[documentation.automation@agilent.com](mailto:documentation.automation@agilent.com)

Web:  
[www.agilent.com/lifesciences/automation](http://www.agilent.com/lifesciences/automation)

## Acknowledgements

Microsoft® and Windows® are either registered trademarks or trademarks of the Microsoft Corporation in the United States and other countries.

## Warranty

**The material contained in this document is provided “as is,” and is subject to being changed, without notice, in future editions. Further, to the maximum extent permitted by applicable law, Agilent disclaims all warranties, either express or implied, with regard to this manual and any information contained herein, including but not limited to the implied warranties of merchantability and fitness for a particular purpose. Agilent shall not be liable for errors or for incidental or consequential damages in connection with the furnishing, use, or performance of this document or of any information contained herein. Should Agilent and the user have a separate written agreement with warranty terms covering the material in this document that conflict with these terms, the warranty terms in the separate agreement shall control.**

## Technology Licenses


The hardware and/or software described in this document are furnished under a license and may be used or copied only in accordance with the terms of such license.

## Restricted Rights Legend

If software is for use in the performance of a U.S. Government prime contract or sub-contract, Software is delivered and licensed as “Commercial computer software” as defined in DFAR 252.227-7014 (June 1995), or as a “commercial item” as defined in FAR 2.101(a) or as “Restricted computer software” as defined in FAR 52.227-19 (June 1987) or any equivalent agency regulation or contract clause. Use, duplication or disclosure of Software is subject to Agilent Technologies’ standard commercial license terms, and non-DOD Departments and Agencies of the U.S. Government will receive no greater than Restricted Rights as defined in FAR 52.227-19(c)(1-2) (June 1987). U.S. Government users will receive no greater than Limited Rights as defined in FAR 52.227-14

(June 1987) or DFAR 252.227-7015 (b)(2) (November 1995), as applicable in any technical data.

## Safety Notices

 **A WARNING notice denotes a hazard. It calls attention to an operating procedure, practice, or the like that, if not correctly performed or adhered to, could result in personal injury or death. Do not proceed beyond a WARNING notice until the indicated conditions are fully understood and met.**

A **CAUTION** notice denotes a hazard. It calls attention to an operating procedure, practice, or the like that, if not correctly performed or adhered to, could result in damage to the product or loss of important data. Do not proceed beyond a **CAUTION** notice until the indicated conditions are fully understood and met.

# Intellicyt Hypercyt Autosampler Device Driver Quick Reference

This document contains the following topics:

- [About this document](#)
- [Intellicyt Hypercyt Autosampler Diagnostics](#)
- [Intellicyt Hypercyt Autosampler protocol tasks](#)

## About this document

### What this guide covers

The Intellicyt Hypercyt Autosampler is a sample handler that connects to and accelerates sample delivery to standard flow cytometers, thereby increasing throughput. The autosampler can be integrated into a lab automation system that is controlled by the VWorks software.

This document provides a quick reference of the commands, selections, and parameters in the following:

- [Intellicyt Hypercyt Autosampler Diagnostics](#)
- [Intellicyt Hypercyt Autosampler protocol tasks](#)

### Assumptions

This document assumes that you are familiar with the VWorks software and that you know how to:

- Add a device to a device file.
- Open the device diagnostics software.
- Create and manage profiles.
- Create a protocol and add protocol tasks.

### Software version

The functions described in this document are available in the following software:

- VWorks Automation Control 11.4 or later
- Hyperview 4.0
- Forecyt 2.0

### Related documents

Use this document in conjunction with the following:

- [VWorks Automation Control Setup Guide](#)
- [VWorks Automation Control User Guide](#)
- Lab automation system user guide, such as the [BioCel System User Guide](#)
- User documentation for the Hyperview or Forecyt software

For user information about other Automation Solutions products, you can search the product knowledge base or download the latest version of a PDF file from the Agilent Technologies website at:

[www.agilent.com/chem/askb](http://www.agilent.com/chem/askb).

# IntelliCyt HyperCyt Autosampler Diagnostics

## About IntelliCyt HyperCyt Autosampler Diagnostics

You use IntelliCyt HyperCyt Autosampler Diagnostics to:

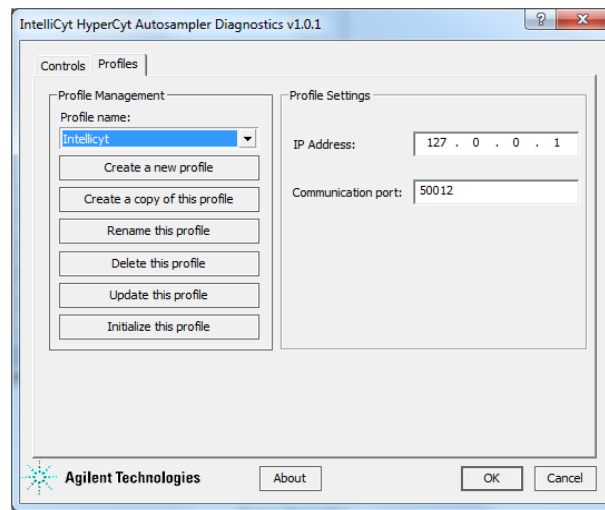
- *Create and manage profiles.* A profile allows you to set up communication between the Autosampler and the controlling computer.
- *Run experiments or prime the lines.* Using the available commands, you can run selected experiments or prime the lines of the autosampler.

This topic provides a quick reference of the commands, selections, and parameters in the following IntelliCyt HyperCyt Autosampler Diagnostics tabs:

- [Profiles tab](#)
- [Controls tab](#)

For instructions on adding the autosampler device to your device file and opening IntelliCyt HyperCyt Autosampler Diagnostics, see the lab automation system user guide, such as the [BioCel System User Guide](#).

## Profiles tab



### Profile Management area

Command	Description
Profile name	Displays the selected profile. Also allows you to select from the list of available profiles.
Create a new profile	Creates a new profile.
Create a copy of this profile	Creates a duplicate copy of the selected profile.
Rename this profile	Renames the selected profile.
Delete this profile	Deletes the selected profile.

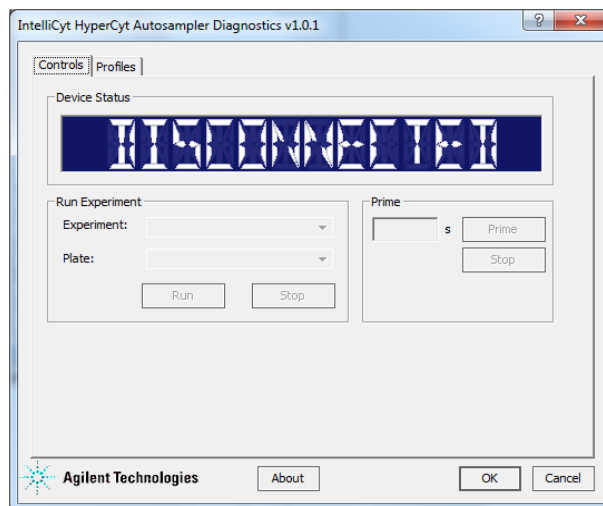
Command	Description
Update this profile	Saves changes to the selected profile.
Initialize this profile	Initiates communication with the device using the selected profile.

**Profile Settings area**

Setting or option	Description
IP address	The IP address of the computer that is connected to the autosampler and running the Hyperview or Forecyt software.  If the Hyperview or Forecyt software runs on the same computer as VWorks software, then specify the loopback address, 127.0.0.1.
Communication port	The computer IP port number on which the Hyperview or Forecyt software are listening.

**Controls tab**

**IMPORTANT** Before using the commands to operate the autosampler, make sure it is in the Remote mode. To set it in the Remote mode, start the Hyperview or Forecyt software; start the VWorks software; and initialize the device in the VWorks software. Working in the Hyperview or Forecyt software after the device is initialized will cause the device to change to the Manual mode. To return to the Remote mode, re-initialize the device in the VWorks software.



**Device Status area**

Displays the autosampler’s current state.

### Run Experiment area

Selection or command	Description
Experiment	The experiment that you want to load and run on the autosampler.  Select the desired experiment from the list. The experiments are created in the Hyperview or Forecyt software. For instructions on creating experiments, see the user documentation for the Hyperview or Forecyt software.
Plate	The microplate that will be loaded into the autosampler for the experiment.  Select the desired microplate from the list. The list of microplates are created in the Hyperview or Forecyt software. For more information, see the user documentation for the Hyperview or Forecyt software.
Run	Starts the selected experiment.
Stop	Stops the currently running experiment.

### Prime area

Setting or command	Description
____ s	The length of time, in seconds, that the lines will be primed.
Prime	Starts the priming.
Stop	Stops the priming.

## Intellicyt Hypercyt Autosampler protocol tasks

### About the tasks

You can add the following protocol tasks for the autosampler:


- [Generate Experiment List](#)
- [Prime](#)
- [Run Experiment](#)

The tasks are associated with the autosampler only. This topic describes these device-specific tasks.

**IMPORTANT** Before running the protocol that contains the autosampler tasks, make sure the autosampler is in the Remote mode. To set it in the Remote mode, start the Hyperview or Forecyt software; start the VWorks software; and initialize the device in the VWorks software. Working in the Hyperview or Forecyt software after the device is initialized will cause the device to change to the Manual mode. To return to the Remote mode, re-initialize the device in the VWorks software.

## Generate Experiment List

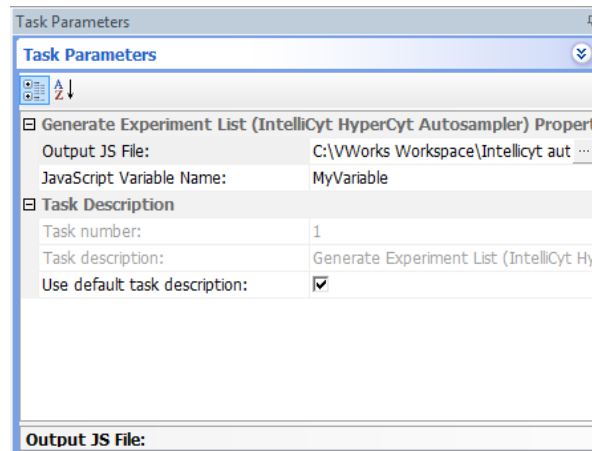
### Description

The Generate Experiment List (  Generate Experiment List (IntelliCyt HyperCyt Autosampler) ) task:

- 1 Retrieves the list of experiments from the Hyperview or Forecyt software.
- 2 Assigns the experiment names to the specified JavaScript variable as a semi-colon-separated string.

*Note:* The task is available in the Startup, Main, and Cleanup Protocol.

### Task parameters




Parameter	Description
Output JS File	The name and path of the JavaScript file that is created after the list of experiments are retrieved from the Hyperview or Forecyt software.  Click the Output JS File field, and then click the browse button that appears to specify a location and provide a name for the file.
JavaScript Variable Name	The JavaScript variable that is assigned to the retrieved list of experiments.  For example, if the variable name you provide is MyVariable, then in the JavaScript file, the assignment is MyVariable="Experiment_1;Experiment_2;Experiment_3", where Experiment_n is the list of the experiments retrieved.

Parameter	Description
Task number	The number that indicates the position of the task in the protocol.
Task description	The description of the task.
Use default task description	The option to use the default task description or provide your own description for the task. Select the check box to use the default description. Clear the check box to provide your own description.

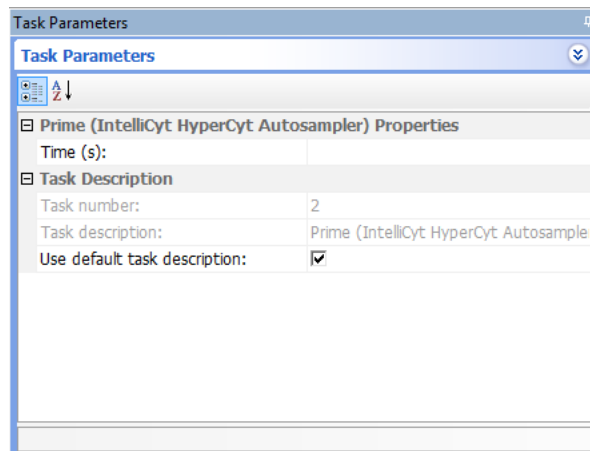
## Prime

### Description

The Prime (  Prime (IntelliCyt HyperCyt Autosampler) ) task primes the autosampler lines.

*Note:* The task is available in the Startup, Main, and Cleanup Protocol.


### Task parameters



Parameter	Description
Time (s)	The length of time, in seconds, that the autosampler lines will be primed.
Task number	The number that indicates the position of the task in the protocol.
Task description	The description of the task.
Use default task description	The option to use the default task description or provide your own description for the task. Select the check box to use the default description. Clear the check box to provide your own description.

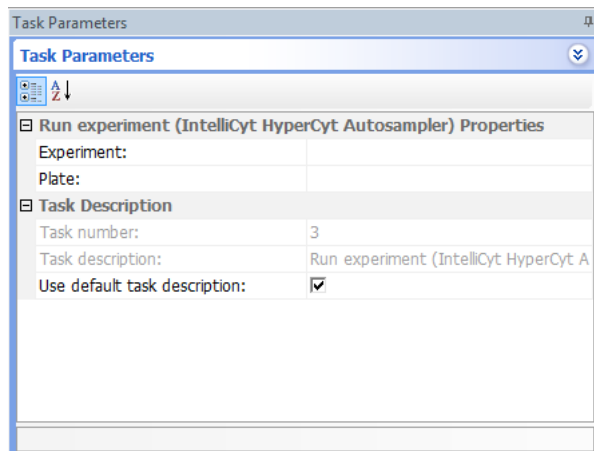
## Run Experiment

### Description

The Run Experiment (  Run experiment (IntelliCyt HyperCyt Autosampler) ) task loads and runs the selected experiment on the autosampler.

*Note:* The task is available only in the Main Protocol.

### Task parameters



Display or command	Description
Experiment	The experiment that you want to load and run on the autosampler. Select the desired experiment from the list. The experiments are created in the Hyperview or Forecyt software. For instructions on creating experiments, see the user documentation for the Hyperview or Forecyt software.
Plate	The microplate that will be loaded into the autosampler for the experiment. Select the desired microplate from the list. The list of microplates are created in the Hyperview or Forecyt software. For more information, see the user documentation for the Hyperview or Forecyt software.
Task number	The number that indicates the position of the task in the protocol.
Task description	The description of the task.
Use default task description	The option to use the default task description or provide your own description for the task. Select the check box to use the default description. Clear the check box to provide your own description.





**Quick Reference**

**G5415-90001**

Revision 00, December 2012